



# Roxtec knock-out frame UG™ transit

Frame with knock-out plate for sealing prior to cable and pipe routing.

The Roxtec knock-out frame (KOF) UG™ is a multi-cable and pipe transit that keeps your site dry during and after construction. The frame can be installed and cast into structures of different thicknesses and maintains a tight seal until its plate is knocked out for cable and pipe routing. Once cables or pipes are routed, the transit is sealed with Roxtec UG™ modules for underground use. The sealing modules are adaptable to cables and pipes of different sizes and can be used to build in spare capacity in the transit.

The KOF with plate can also be used to provide spare capacity for future needs. The frame depth is adjustable by 50mm using the KOF adapter, allowing it to align with various wall depths. The frames have an integrated feature which allows them to be connected into space efficient clusters.



- Light-weight
- Area efficient
- Tightness during building phase

## Product characteristics



Watertight



Gas-tight



IP/UL NEMA

## Structure of installation



Concrete

## Mounting type



Casting

## Ratings & certificates

### Tightness

- Gas: 0.3 bar (constant)
- Water: 0.5 bar (constant)
- IP 68

## Frame dimensions

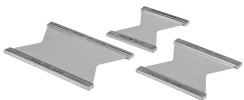
mm/kg

The frame variants below are a limited selection. For the full range of frames and configurations, please visit [roxtec.com](https://www.roxtec.com).

Product	Frame openings	Packing space	External dimensions WxHxD	Aperture dimensions w x h	Weight	Art. no
KOF 6x1 D=100	1	120 x 180	226 x 324 x 100	187 x 285	0.6	249058

## Sealing components

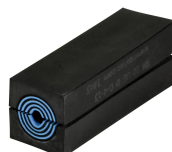
### Sealing components



Stayplate



Lubricant



RM UG™ module with Multidiameter™



RM UG™ solid compensation module

For detailed information, please visit [roxtec.com](https://www.roxtec.com).



The product information provided by Roxtec does not release the purchaser of the Roxtec system, or part thereof, from the obligation to independently determine the suitability of the products for the intended process, installation and/or use.

Roxtec gives no guarantee for the Roxtec system or any part thereof and assumes no liability for any loss or damage whatsoever, whether direct, indirect, consequential, loss of profit or otherwise, occurred or caused by the Roxtec systems or installations containing components not manufactured by an authorized manufacturer and/or occurred or caused by the use of the Roxtec system in a manner or for an application other than for which the Roxtec system was designed or intended.

Roxtec expressly excludes any implied warranties of merchantability and fitness for a particular purpose and all other express or implied representations and warranties provided by statute or common law. User determines suitability of the Roxtec system for intended use and assumes all risk and liability in connection therewith. In no event shall Roxtec be liable for indirect, consequential, punitive, special, exemplary or incidental damages or losses.

The Roxtec products are offered and sold in accordance with the conditions of the Roxtec General Terms of Sales. The latest version of the Roxtec General Terms of Sales can be downloaded from <https://www.roxtec.com/en/about-us/about-roxtec/general-terms-of-sales/>

We reserve the right to make changes to the product and technical information without further notice. Any errors in print or entry are no claims for indemnity. The content of this publication is the property of Roxtec International AB and is protected by copyright.

This document was generated on: 2025-12-18

